

# 2i

## Infection et Inflammation

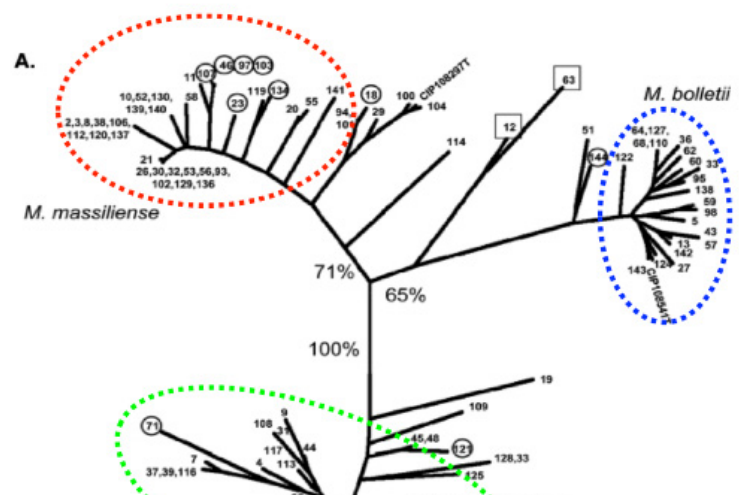


## TEAM 3 : PHYSIOPATHOLOGY AND DIAGNOSTIC OF MICROBIAL INFECTIONS

The Epidemiology of Microbial Pathogenesis and Infections (EPIM) team includes microbiologists, infectious disease specialists and scientists whose respective specialties are dedicated to the understanding of acute and chronic infectious mechanisms affecting mainly the lungs and bones.

Three groups of pathogens are studied: the bacteria responsible for bone and joint infections (staphylococci, *Propionibacterium* spp); the rapidly growing mycobacteria (*Mycobacterium abscessus*) and Respiratory Syncytial Virus.

All have in common of causing acute or chronic inflammatory responses in



the host following infection, and our role is to understand the mechanisms in order to block or inhibit the development of these pathogens

inside the host by therapeutic or vaccine approaches . Understanding these mechanisms also allows the discovery of biological markers related to the host or related to the pathogen that we can use as diagnostic tools through the establishment of a biomarker platform dedicated to their purification, characterization and development as a diagnostic tool.

